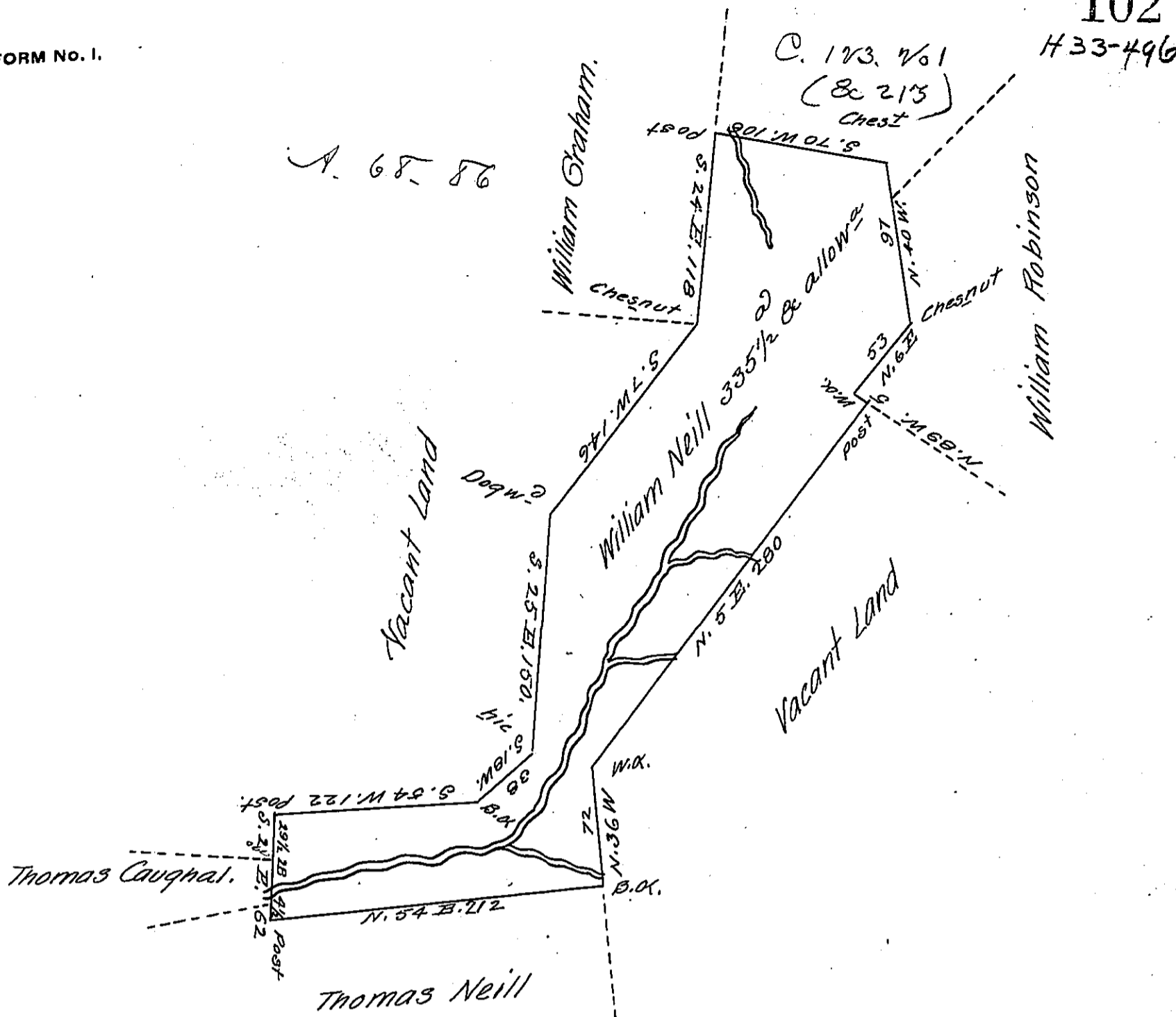


A. 68. 56

C. 173. 761
(& 215)
Chest



Survey'd to William Neill on the 8th Day of January 1787
 the above described Tract of Three Hundred and thirty five
 acres and an half of an acre and allowance of six P^{ct} Cent
 adjoining Land of Ptolly Rogers on the West. at the North of
 a Run Emptying into Altmans Run in Westmorland County. by
 Warrant of the 1st Day of July 1784.

Joshua Elder D.S.

Armstrong Township now Indiana County

John Luthens Esq^r S. Gen^l.

IN TESTIMONY that the above is a copy of the original remaining on file in
 the Department of Internal Affairs of Pennsylvania, made
 conformably to an Act of Assembly approved the 16th day of
 February, 1833, I have hereunto set my Hand and caused
 the Seal of said Department to be affixed at Harrisburg,
 this first day of June 1906.

Geo. B. Pennington
 Secretary of Internal Affairs